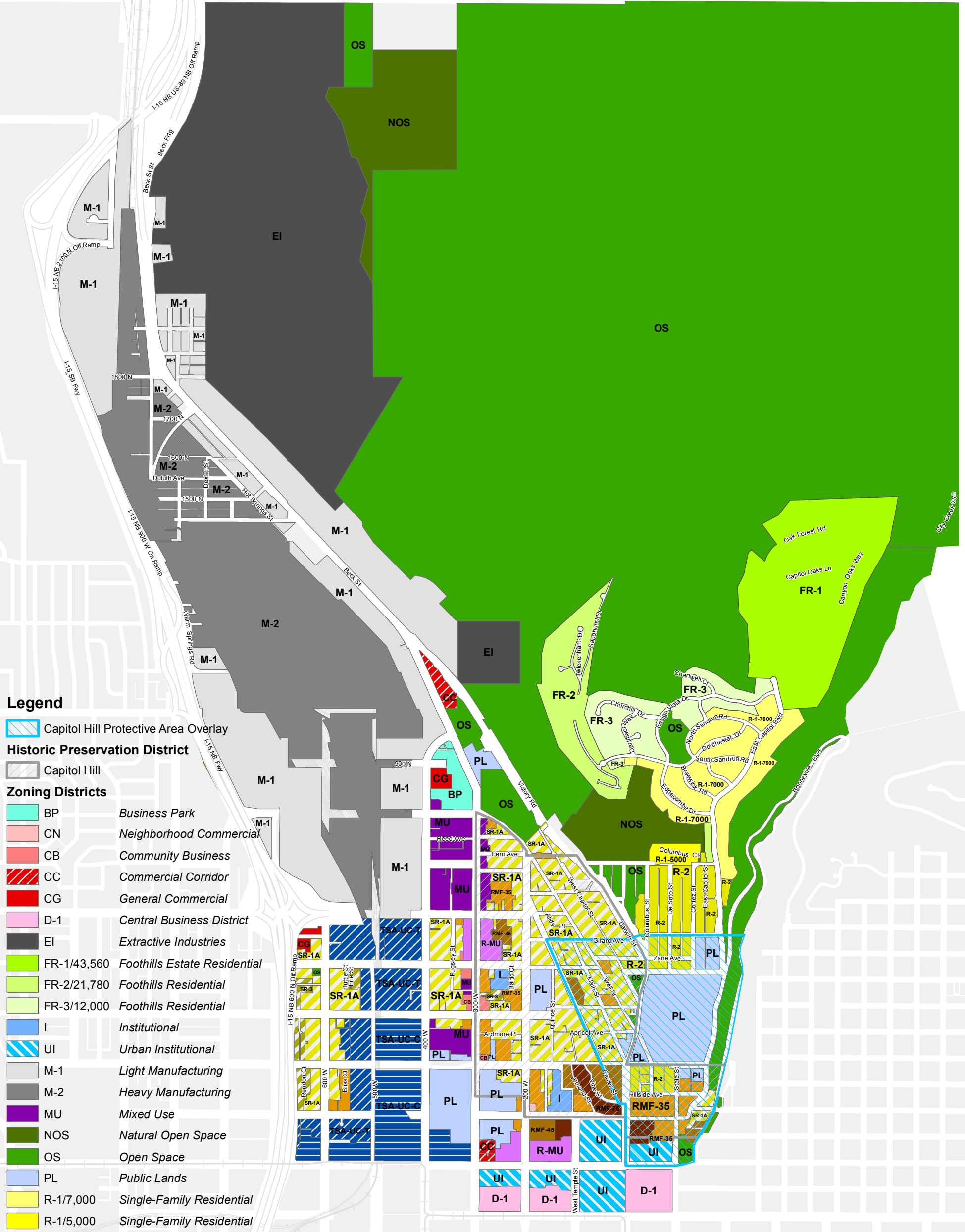


# Capitol Hill Zoning Map



## Legend

- Capitol Hill Protective Area Overlay
- Historic Preservation District**
- Capitol Hill
- Zoning Districts**
- BP *Business Park*
- CN *Neighborhood Commercial*
- CB *Community Business*
- CC *Commercial Corridor*
- CG *General Commercial*
- D-1 *Central Business District*
- EI *Extractive Industries*
- FR-1/43,560 *Foothills Estate Residential*
- FR-2/21,780 *Foothills Residential*
- FR-3/12,000 *Foothills Residential*
- I *Institutional*
- UI *Urban Institutional*
- M-1 *Light Manufacturing*
- M-2 *Heavy Manufacturing*
- MU *Mixed Use*
- NOS *Natural Open Space*
- OS *Open Space*
- PL *Public Lands*
- R-1/7,000 *Single-Family Residential*
- R-1/5,000 *Single-Family Residential*
- R-2 *Single- and Two-Family Residential*
- R-MU *Residential/Mixed Use*
- RMF-35 *Moderate Density Multi-Family Residential*
- RMF-45 *Moderate/High Density Multi-Family Residential*
- RMF-75 *High Density Multi-Family Residential*
- SR-1A *Special Development Pattern Residential*
- SR-3 *Special Development Pattern Residential*
- TSA-UC-C *Urban Center- Core*
- TSA-UC-T *Urban Center- Transition*

