

# Bishop Place Subdivision

A part of Section 36, T1N, R1W, SLB&M, U.S. Survey  
Salt Lake City, Salt Lake County, Utah  
May 2014

## SURVEYOR'S CERTIFICATE

I, Andy Hubbard, do hereby certify that I am a Registered Professional Land Surveyor in the State of Utah, and that I hold Certificate No. 6242920 in accordance with Title 58, Chapter 22, of the Professional Engineers and Land Surveyors Licensing Act. I also certify that I have completed a survey of the property described hereon in accordance with Section 17-23-17 and that I have verified all measurements shown hereon this plat of Bishop Place Subdivision, in Salt Lake City, Salt Lake County, Utah and that it has been correctly drawn to the designated scale and is a true and correct representation of the following description of lands included in said subdivision, based on data compiled from records in the Weber County Recorder's Office. Monuments have been found or placed as represented on this plat.

Signed this \_\_\_\_ day of March, 2014.

6242920  
License No.

Andy Hubbard

## OWNER'S DEDICATION

We, the undersigned owners of the hereon described tract of land, hereby set apart and subdivide the same into lots, parcels and streets as shown on this plat, and name said tract Bishop Place Subdivision, and hereby dedicate, grant and convey to Salt Lake City, Salt Lake County, Utah, Bishop Place, the same to be used as public thoroughfares forever, and also dedicate to Salt Lake City those certain strips designated as public utility easements for public utility and drainage purposes as shown hereon, the same to be used for the installation, maintenance, and operation of public utility service lines and drainage, as may be authorized by Salt Lake City.

Signed this \_\_\_\_ day of \_\_\_\_ 2014.

~ Bishop Place Subdivision ~

John Maxim - Manager

## ACKNOWLEDGMENT

State of Utah } ss  
County of Weber }

On the \_\_\_\_ day of \_\_\_\_, 2014 personally appeared before me, John Maxim who being by me duly sworn did say that they are Members of \_\_\_\_, and that said instrument was signed in behalf of said L.L.C. by a resolution of its Members, and John Maxim acknowledged to me that said L.L.C. executed the same.

Residing at: \_\_\_\_\_  
A Notary Public commission in Utah

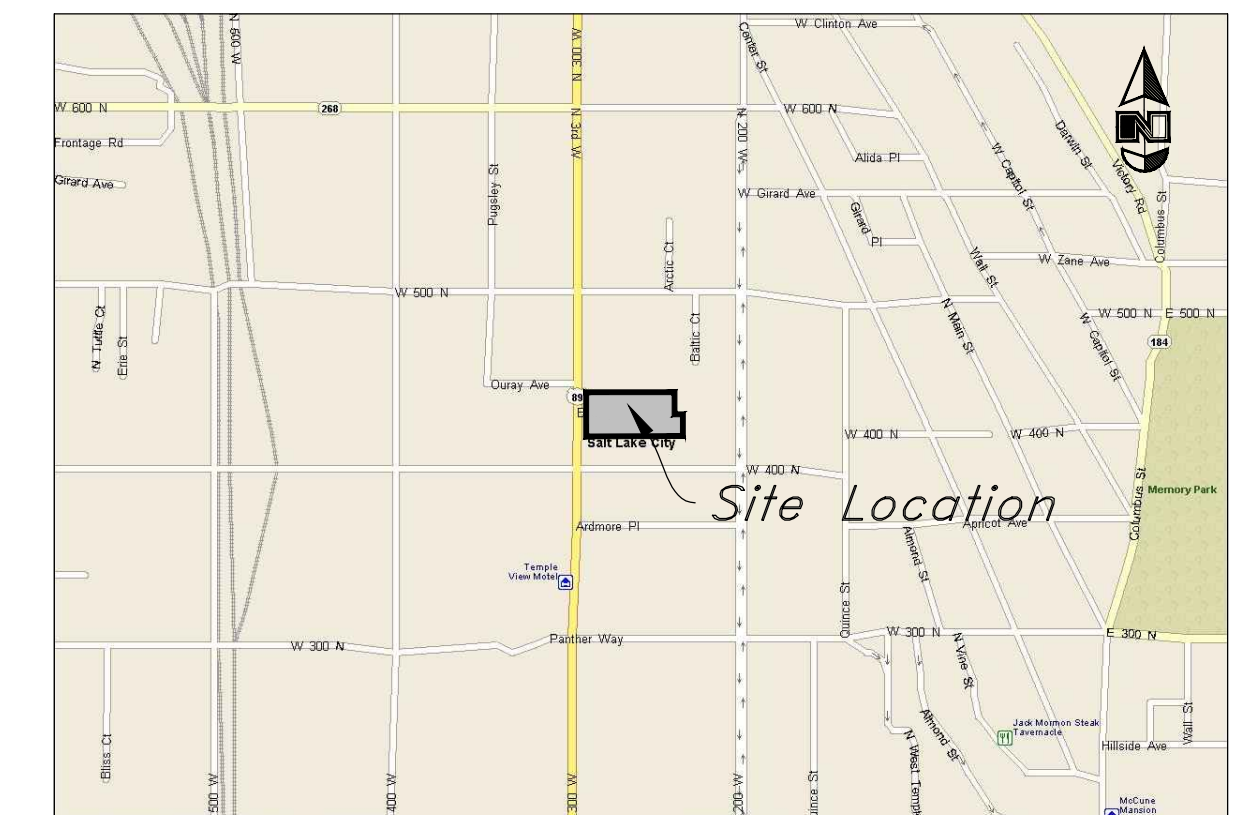
Commission Expires: \_\_\_\_\_  
Print Name

## BOUNDARY DESCRIPTION

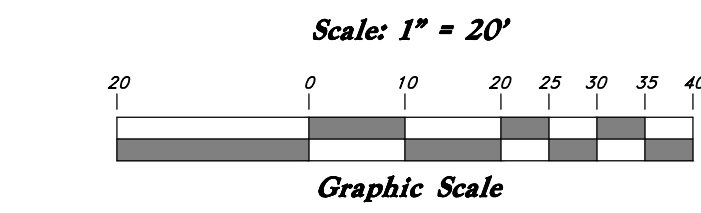
A part of the Southwest 1/4 of Section 36, Township 1 North, Range 1 West Salt Lake Base & Meridian, U.S. Survey:

Beginning at point from a Standard Salt Lake City Monument at the Intersection 200 West Street and 400 North Street running thence along said Section Line 228.85 feet North 00°01'07" West and 360.88 feet South 89°59'28" West from the Southeast Corner of Block 121; and Running thence South 89°59'28" West 272.92 feet; thence North 00°01'05" East 57.79 feet; thence South 89°59'28" West 90.04 feet; thence North 00°01'05" West 66.05 feet; thence North 89°59'09" East 164.97 feet; thence North 00°01'05" West 41.28 feet; thence North 89°59'05" East 165.00 feet; thence South 00°00'24" West 82.50 feet; thence North 89°59'28" East 32.99 feet; thence South 00°01'06" East 82.56 feet to the Point of Beginning.

Contains 1.037 acres.

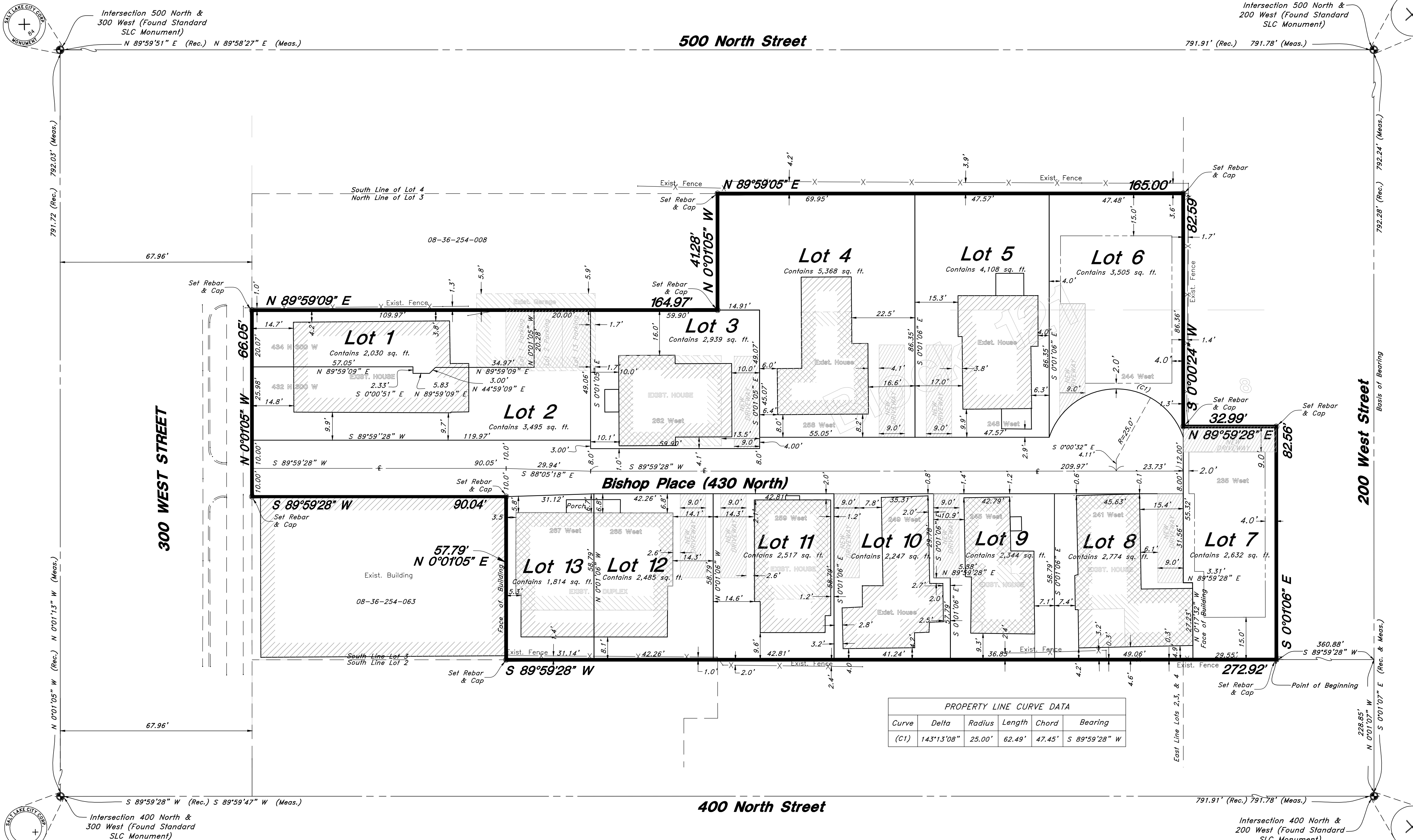


Vicinity Map N.T.S.



## Legend

- ▲ Set Nail & Washer
- Set 5/8" Rebar & Cap w/ Fencepost
- ⊕ Set Hub & Tack
- ⊙ Found Monuments
- (Rad.) Radial Line
- (N/R) Non-Radial Line



Curve	Delta	Radius	Length	Chord	Bearing
(C1)	143°13'08"	25.00'	62.49'	47.45'	S 89°59'28" W

This Plat Comprises the following Serial numbers:  
08-36-254-009  
08-36-254-017  
08-36-254-018  
08-36-254-062  
08-36-254-027  
08-36-254-028  
08-36-254-025  
08-36-254-024  
08-36-254-023  
08-36-254-022

Statement of Accuracy  
The positional accuracy of the lines and corners of this survey is within the specifications of an Urban Survey which is a maximum error of 0.077' or 1:15,000. The property closes within 0.00' or 1:302066.

## SALT LAKE CITY APPROVAL

Presented to Salt Lake City this \_\_\_\_ day of \_\_\_\_, 2014, and is hereby approved.

## SALT LAKE CITY ATTORNEY

Approved as to form this \_\_\_\_ day of \_\_\_\_, 2014, and is hereby approved.

## CITY DEPT. OF PUBLIC UTILITIES

Approved this \_\_\_\_ day of \_\_\_\_, 2014,

## CITY ENGINEERING DIVISION

I hereby certify that I have had this Plat examined by this office and it is correct in accordance with the information on file and is hereby approved.

## CITY PLANNING DIRECTOR

Approved this \_\_\_\_ day of \_\_\_\_, 2014, by the Salt Lake City Planning Commission.



5746 SOUTH 1475 EAST OGDEN, UTAH 84403  
MAIN (801)394-4451 FAX (801)521-9222 FAX (801)392-7544  
WWW.GREATBASINENGINEERING.COM

S.L.C. Recorder S.L.C. Mayor

S.L.C. Attorney

Director

City Engineer

City Surveyor

Planning Director

SALT LAKE COUNTY RECORDER

ENTRY NO. \_\_\_\_\_ FEE PAID \_\_\_\_\_  
RECORDED \_\_\_\_\_ AT \_\_\_\_\_  
IN BOOK \_\_\_\_\_ OF OFFICIAL RECORDS, PAGE \_\_\_\_\_ RECORDED FOR \_\_\_\_\_

SALT LAKE COUNTY RECORDER

BY: \_\_\_\_\_ DEPUTY